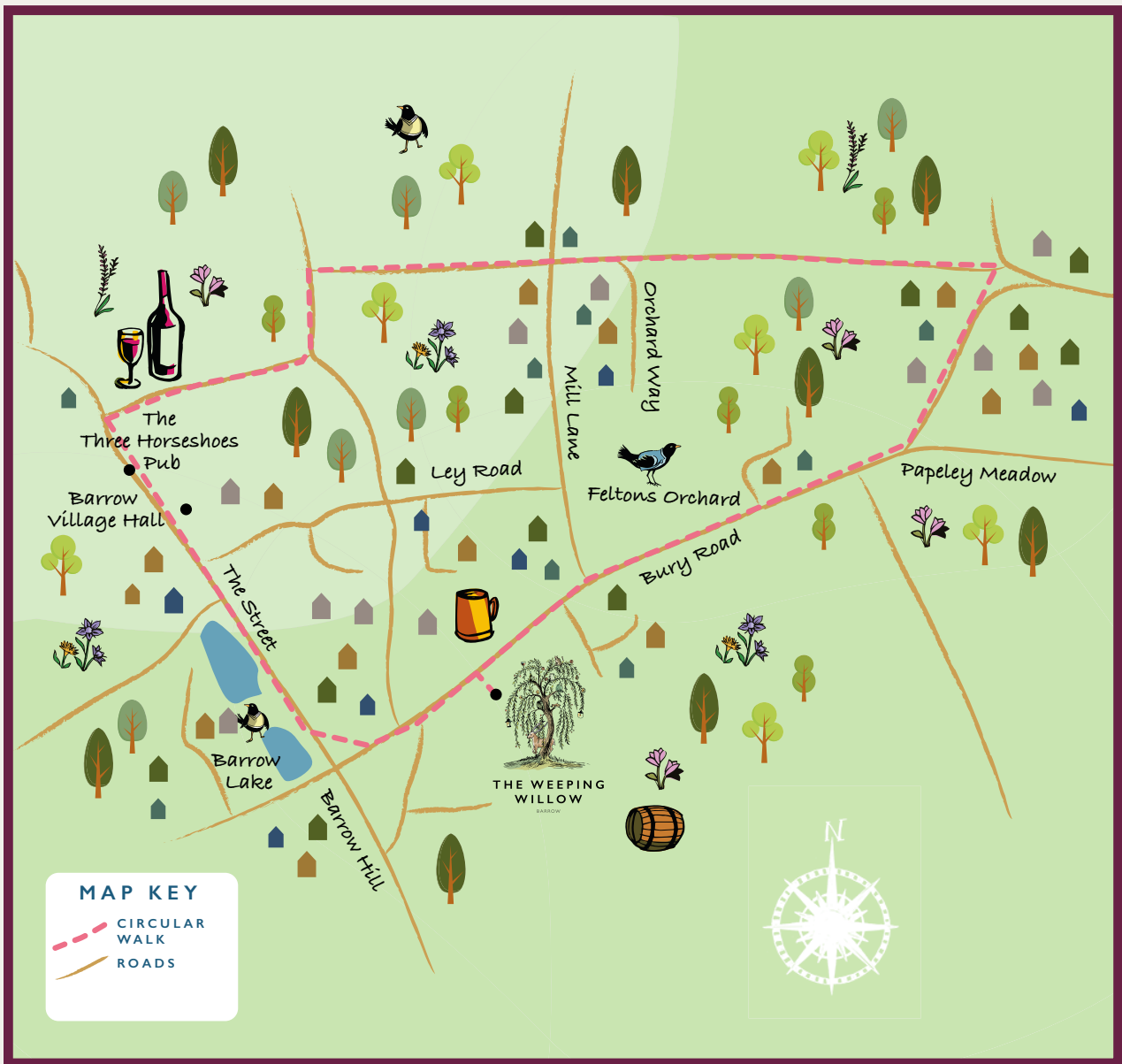


# WEeping WILLOW WANDER

*Circular scenic walk from The Weeping Willow, Barrow*



## THE WEEPING WILLOW CIRCULAR WALK

1.5 MILES

35 MINUTE WALK

From the Weeping Willow, turn left and follow the road until you reach a fork. Take a right at the fork and continue walking along the grassy road banks. Keep going until you spot the no-entry road signs. Take a right at a smaller fork, passing by the Barrow war memorial on your left.

Next, make a right turn onto the main road and continue in the direction of The Three Horseshoes Pub. A bit further ahead, you'll notice a footpath on the opposite side of the road from the pub.

Follow the footpath and go through a large wooden gate. Keep walking down the grassy track until you reach the village playing field.

Stick to the left side of the tree-lined field and turn left, crossing a small footbridge nestled between the trees. Proceed straight along the path, ignoring the immediate right turn after the footbridge. Continue for a short distance and then take the next path on your right, which lies between a field of wheat on your left and hedgerow on your right.

Once you reach the end of the field, you'll come across an alleyway that leads to a smaller road called Mill Lane. Walk straight through this quaint village road and pass through the tree arch at the opposite end. Follow the path as it takes you through a tree tunnel, eventually leading you to Sharpes Hill.

Upon reaching the triangular green area, turn right onto the road and head downwards towards Papeley Meadow Road. Make a right turn and head uphill on Bury Road, heading back towards The Weeping Willow.



# AROUND AND ABOUT

## *Points of interest in Barrow*



### **BARROW WAR MEMORIAL**

The aftermath of the First World War saw the biggest single wave of public commemoration ever, with tens of thousands of memorials erected across England. This was the result of both the huge impact on communities of the loss of three quarters of a million British lives, and also the official policy of not repatriating the dead which meant that the memorials provided the main focus of the grief felt at this great loss.

One such memorial was raised at Barrow as a permanent testament to the sacrifice made by 33 members of the local community who lost their lives in the First World War. The type of memorial and its location had been a source of considerable controversy, with the Rector favouring the erection of a stone tablet in the church, but parishioners voted overwhelmingly in favour of an obelisk on the village green.

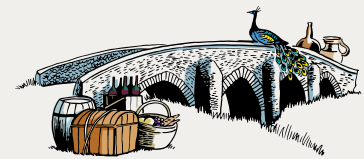
The memorial was constructed in 1919 by HG Neville and Son of Mildenhall and was unveiled by Captain Owen A Clark on Sunday 28 November 1920. The names of 11 parishioners who died during the Second World War were subsequently added to the memorial.



### **ALL SAINTS CHURCH, BARROW**

The Church sits on the outskirts of Barrow and the reason for its isolation from the centre of the village remains unknown. The history of All Saints can be traced from the Norman and Early English period. The oldest part is the North wall which has two Norman windows, in one of which are medieval paintings of musicians. The tower houses six bells that are rung regularly by a team of ringers. The stained glass window under the pointed arch on the East wall was installed in 1848 and is a splendid backdrop for the high altar. The font dates from 1401.

## OUR INNS



### **THE PACKHORSE INN** MOULTON

The Packhorse Inn, Moulton. A village green, a thriving local shop, a meandering river and an award winning local - Moulton really is the quintessential rural idyll. Nestled in the folds of the West Suffolk hills, the Packhorse Inn sits at the heart of its community.

[www.thepackhorseinn.com](http://www.thepackhorseinn.com) 01638 751818  
Bridge St, Moulton, Newmarket, Suffolk CB8 8SP



### **THE CARPENTERS ARMS** GREAT WILBRAHAM

The Carpenters Arms, Great Wilbraham. Serving the community for 250 years, The Carpenters Arms has a long tradition of genuine hospitality. It has re-opened with its historical interiors sympathetically, but spectacularly refreshed.

[www.carpentersarmswilbraham.co.uk](http://www.carpentersarmswilbraham.co.uk) 0 1223 827444  
10 High St, Great Wilbraham, Cambridge, CB21 5JD



DISCOVER MORE OF OUR PUBS WITH ROOMS AT:

[www.chestnutgroup.co.uk](http://www.chestnutgroup.co.uk)